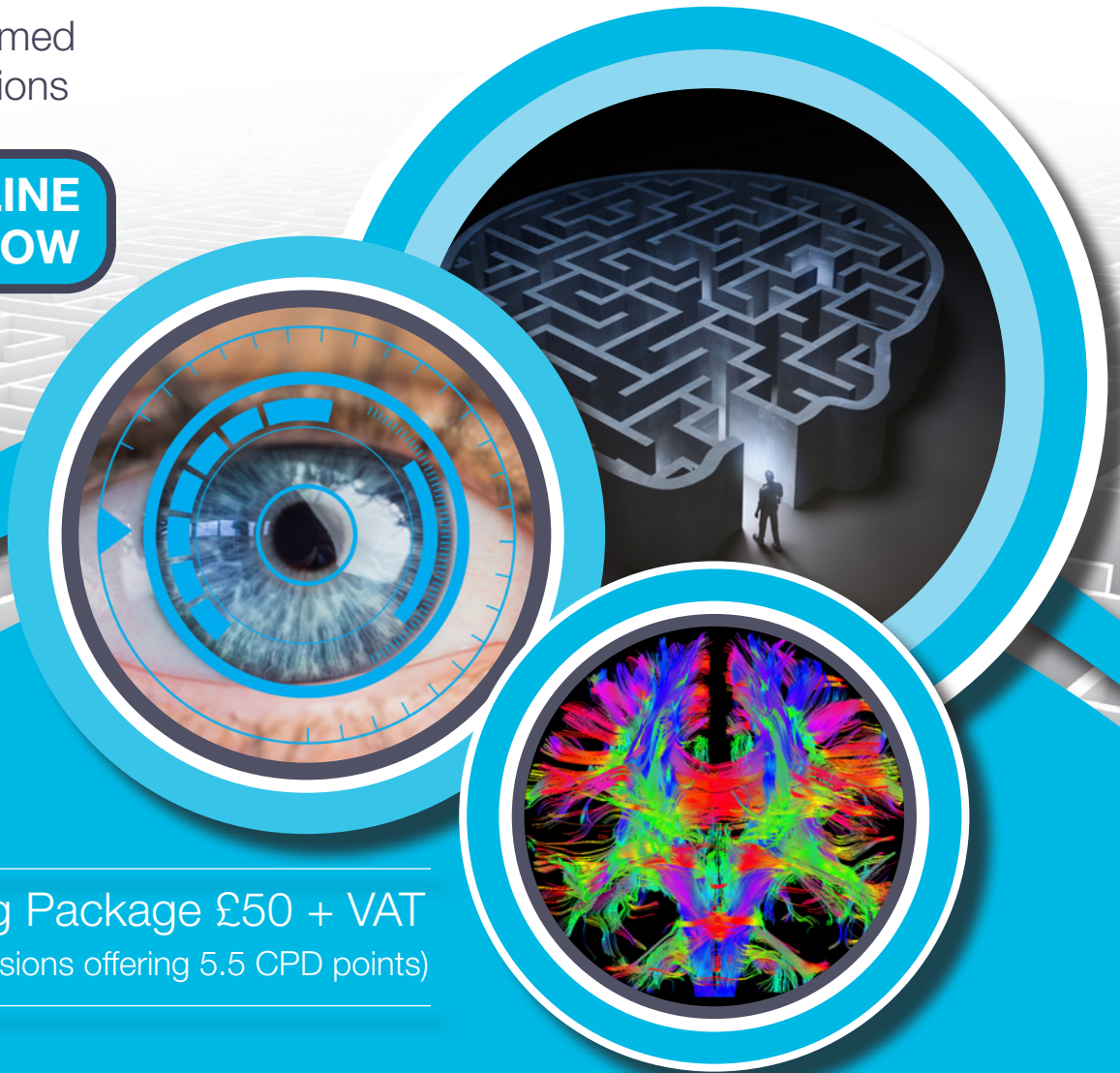


Seeing is Believing

mTBI & PTSD unlocking the complexity and controversy

Professionally filmed
accredited sessions

**BOOK ONLINE
COURSE NOW**



Online Training Package £50 + VAT
(This includes 9 sessions offering 5.5 CPD points)

**NHS STAFF
20% DISCOUNT**

5.5 POINTS



Organised by



Sponsored by



**BOOK ONLINE
COURSE NOW**

There are 9 sessions included in this online resource package. Each presentation has the slides included in the video however you may also access the slides separately.

Session 1 (50 minutes)

The Journey so far: from the “Big Picture” to “Seeing is Believing”

There have been significant advances in the understanding of structural brain injury over the past six years, since Re:Cognition Health's first conference in this series. Dr MacSweeney reviews how the development of increasingly sophisticated neuro-imaging techniques, including new biomarkers for interpreting and objectively measuring brain injury, have advanced our understanding of brain injury. The application of these scientific and technical advances in neuro-imaging will be discussed, particularly in the context of mTBI (mild traumatic brain injury) and PTSD in clinical and medico-legal practice now and in the near future.

Dr Emer MacSweeney, CEO & Medical Director, Re:Cognition Health

Session 2 (44 minutes)

Important clinical updates in mild traumatic brain injury (mTBI)

Dr Allder will provide a comprehensive clinical and scientific update on the understanding and implications of mTBI. He will explain how a greater understanding of the mechanisms of brain injury and the subsequent damage to brain networks explains the complex presentation of individuals with mTBI. Dr Allder will illustrate how we can start to make sense of the persistent headaches, fatigue and other clinical features characteristically demonstrated post-mTBI.

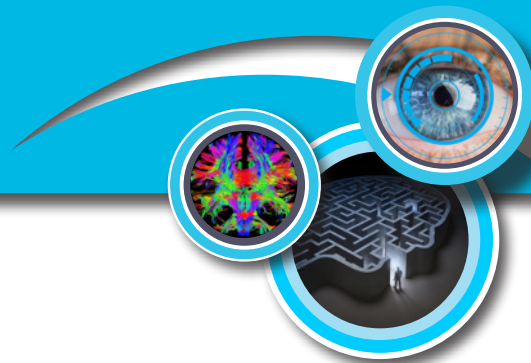
Dr Steven Allder, Consultant Neurologist, Re:Cognition Health

Session 3 (45 minutes)

Neuropsychiatric interpretation of mTBI: a problem of the brain or the mind?

Dr Bourke will explore how the emerging neurobiology of neuropsychiatric syndromes provides a greater understanding of the specific and well recognised neuropsychiatric syndromes following TBI, in particular mTBI. Dr Bourke will explain how this knowledge enables an understanding of the role of psychiatric symptoms before a patient suffers a mTBI and how it impacts upon the development of symptoms, following the injury.

Dr. JH Bourke, MBBS, MRCPsych, Consultant Psychiatrist: Liaison & Neuropsychiatry, Honorary Clinical Senior Lecturer in Neurophysiology & Clinical Psychiatry (QMUL)



**BOOK ONLINE
COURSE NOW**

Session 4 (40 minutes)

The spectral fingerprints of mTBI: Using MEG as a novel biomarker source for brain injury

Talk one: In his first talk Professor Ben Dunkley will introduce the role of Magnetoencephalography (MEG) in TBI, with particular focus on mTBI. He will explain how MEG can better characterize brain pathophysiology, especially in patients with mTBI with normal conventional MRI brain imaging. The correlation between MEG abnormalities and neuropsychological testing will be reviewed.

Dr. Benjamin Dunkley, Associate Scientist, Hospital for Sick Children

Session 5 (42 minutes)

The invisible wounds of PTSD: imaging the psychological wounds of trauma

Talk Two: In his second talk Professor Ben Dunkley will introduce the use of MEG in PTSD. He will explain how MEG can identify neural circuit dysfunction due to trauma and the emergence of PTSD, and how MEG can be used to differentiate physical from psychological trauma where symptoms often overlap.

Dr. Benjamin Dunkley, Associate Scientist, Hospital for Sick Children

Session 6 (33 minutes)

Review of recent highly contested UK medicolegal cases, in light of new diagnostic imaging biomarkers.

This presentation will focus on the potential additional value that MEG, over all other current imaging techniques, provides to the accurate objective assessment of brain injury in controversial medicolegal cases, involving patients with mTBI. The presentation will include the findings from application of MEG to a series of actual controversial cases.

Professor Paul Furlong, Professor of Clinical Neuroimaging & Director, Aston Brain Centre & Steve Alder, Consultant Neurologist, Re:Cognition Health

Session 7, 8 & 9 (38 minutes)

Debate: "Is seeing believing"? Will new diagnostic biomarkers change mTBI litigation?

This presentation provides the forum for a barrister and senior solicitor to debate how emerging neuro-imaging techniques are likely to impact on medicolegal Personal Injury practice of mTBI. They will highlight specific issues likely to emerge for solicitors interested in utilising these updates.

William Latimer-Sayer QC, Cloisters & Stuart Brazington, Partner, Royds Withy King

This conference took place on 10th October 2019

5.5 POINTS



Organised by



Sponsored by



BIOGRAPHIES

William Latimer-Sayer QC **Cloisters**

William specialises in catastrophic personal injury and clinical negligence. He has a special interest in quantum and the majority of his work is related to contested assessment of damages hearings. He is consistently highly-rated by the independent legal directories, being ranked by Chambers and Partners in band 1 for both personal injury and clinical negligence.

William is the General Editor of Schedules of Loss: Calculating Damages (Bloomsbury Professional, 4th edition 2018), the leading practitioner textbook on schedules of loss, a co-editor of Facts & Figures (Sweet & Maxwell) and the current Chairman of the Ogden Working party, which is responsible for drafting the Ogden Tables, used by all practitioners and judges to assess damages in personal injury and clinical negligence cases.

William won Chambers and Partners' Personal Injury Silk of the Year in 2018 having previously won Personal Injury Junior of the Year in 2008 and 2010.



Dr Emer MacSweeney **CEO & Medical Director, Re:Cognition Health**

Dr Emer MacSweeney is a leading London neuroradiologist with experience in both the NHS and the independent sector. Currently, she is the CEO and Medical Director of Re:Cognition Health, where she was awarded the KPMG Entrepreneur of the year award in 2016.

Her previous posts include Director of Neuroradiology at Atkinson Morley's Hospital, St George's Healthcare Trust and Managing Director at MedTel UK. She trained in neuroradiology at The Hospital of Neurology and Neurosurgery, Queen's Square, specialising in interventional vascular neuroradiology, and spent time on a scholarship at Harvard University. Dr MacSweeney has a special interest in neuroradiology of cognitive impairment disorders with considerable experience in imaging of neurovascular diseases and traumatic brain injury.

She has extensive experience of providing medicolegal neuroradiology reports, instructed by both claimants, defendants and in response to joint instructions.



**BOOK ONLINE
COURSE NOW**



BIOGRAPHIES



Dr Steven Allder
Consultant Neurologist, Re:Cognition Health

Dr Steven Allder is based at Re:Cognition Health in London, using his clinical expertise to focus primarily on the assessment of patients with traumatic brain injury and neurological medically unexplained symptoms.

Dr Allder is currently embarking on research exploring the utility of Magnetoencephalography (MEG) and Quantitative EEG beyond the most sophisticated structural imaging to accurately detect the presence of organic brain injury patients who have suffered a head injury and have been left with enduring neurological, neuro-cognitive and neuro-emotional sequelae. The aim is that once the presence of organic brain injury can be accurately determined, further research can be targeted at attempting to improve the clinical symptoms that these patients suffer.



Dr. JH Bourke
Consultant Psychiatrist: Liaison & Neuropsychiatry, Honorary Clinical Senior Lecturer in Neurophysiology & Clinical Psychiatry (QMUL)

Dr Julius Bourke is a consultant neuropsychiatrist and has a special interest in the assessment and management of neuropsychiatric disorders such as Parkinson's disease, brain injury and concussion, depression, anxiety (including PTSD and OCD) and stress-related conditions. He is an expert in the diagnosis and management of functional somatic and neurological disorders such as chronic fatigue and chronic pain syndromes, which lie at the interface between general medicine, surgery and psychiatry.

He is frequently instructed in the provision of expert medicolegal opinion on psychiatric disorders, head injury and post-concussion syndromes. Dr Bourke is Clinical Senior Lecturer in neurophysiology and clinical psychiatry at Queen Mary University London. His specialist research interests are in the neurophysiology of chronic pain, the somatic syndromes and stress-related disorders. He has given numerous talks and presentations on both a national and an international basis. Dr Bourke has been widely published on an array of field-related topics. He has co-authored a text book on psychiatry and has contributed chapters to numerous others, including for a world leading textbook on internal medicine and others on chronic pain, fatigue and neuropsychiatric disorders.

**BOOK ONLINE
COURSE NOW**



BIOGRAPHIES

Dr. Benjamin T. Dunkley

Associate Scientist, Diagnostic Imaging / Neurosciences & Mental Health, Hospital for Sick Children. Assistant Professor, Department of Medical Imaging, University of Toronto

Dr. Dunkley is a scientist in Diagnostic Imaging and the Neurosciences & Mental Health Program at the Hospital for Sick Children (SickKids), and an Assistant Professor in the Department of Medical Imaging at the University of Toronto. He studied for his PhD in cognitive neuroscience at Cardiff University, UK, and he completed his postdoctoral training in Toronto at York University and SickKids. His current research interests are on how neural function underlies every day cognitive processes, such as memory, attention, and emotion, and how these processes are impacted by neurological and psychiatric morbidity, such as concussion and PTSD. To this end, he uses cognitive-behavioural paradigms in conjunction with functional brain imaging techniques that image 'brain waves', or oscillations, to study the interplay between these areas. A burgeoning research interest of his is developing machine learning tools to use in diagnostics and prognostics, and to define individualised targets for neurostimulation in pursuit of precision medicine.



Professor Paul Furlong

Professor of Clinical Neuroimaging & Director, Aston Brain Centre

After 10 years in the National Health Service as a Clinical Neurophysiologist, Paul came to lead the clinical scientist team in the Clinical Neurophysiology Unit at Aston University in 1983. In 2000, as part of the team that gained a grant from The Wellcome Trust to install the first whole head 151 channel MEG system in the UK, Paul joined the Academic staff of the University with a Lectureship in Psychology. Paul was awarded a personal Chair in Clinical Neuroimaging in 2006.

Working with the clinical research team as part of the Clinical Neurophysiology Unit, the Aston Brain Centre (ABC) was created and formally opened in October 2011 with Paul as Director. The ABC now provides a national presurgical evaluation service for patients with epilepsy and also supports Masters and PhD training in Clinical Neurophysiology. A member of the British Society for Clinical Neurophysiology, Paul was elected to Council in 1987.

In 2016, he was elected as Honorary President of the Association for Neurophysiological Scientists, the professional body in the United Kingdom. In the same year, he was elected as Fellow of the Royal Society of Biology, and will deliver the Charter Lecture for the Society in October 2017.



**BOOK ONLINE
COURSE NOW**



BIOGRAPHIES



Stuart Brazington Partner, Royds Withy King

Stuart is a partner who specialises in brain and catastrophic injuries and leads the firm's Brain Injury team, which helps clients who have been catastrophically injured and who need specialist rehabilitation. Stuart is also the Regional lead partner for the firm's Bath offices. Stuart has a special interest in paediatric traumatic brain injury.

He also advises on Court of Protection matters involving loss of capacity due to brain injury. In addition he chairs a professional neuro support group comprising of practitioners with a special interest in brain injury. Stuart has lectured to a wide variety of audiences on brain and spinal injury.

Stuart has been an accredited member of the Law Society's specialist personal injury solicitors' panel for over 21 years. He has been involved in high profile legal cases including challenges to the application of the discount rate and the application of periodical payments in relation to the Motor Insurers' Bureau.

Stuart is also a Trustee of a local Headway, and the Brain injury Social Worker Group (BISWG)

Stuart Brazington is the head of the brain injury team, practising with a particular focus on traumatic brain injury and spinal injury cases. One source describes him as *"a model solicitor: careful, detailed and capable of exercising his own judgement on difficult issues."* Chambers 2018

**BOOK ONLINE
COURSE NOW**

5.5 POINTS



Organised by



Sponsored by



Award-Winning Medico-Legal Services From The Brain & Mind Experts

We provide

- : Expert witness reports**
- : Client representation in court**
- : Joint statements**
- : 3T MRI and PET scans**
- : Innovative diagnostic technologies for traumatic brain injury**
- : Capacity assessments**

Speak to a specialist today

020 3355 3536

www.recognitionhealth.com

medicolegal@re-cognitionhealth.com

77 Wimpole Street

London

W1G 9RU



Compassionate legal advice to help those affected by brain injury get their lives back.

Contact our Brain Injury specialists on
0800 662 266 or email
pi.enquiries@roydswithyking.com
roydswithyking.com

“Royds Withy King’s personal injury team has ‘a wealth of experience and a very client-focussed approach’. It is ‘very strong on brain injury claims’ and provides an overall ‘excellent’ level of service.”

Legal 500 2017

